

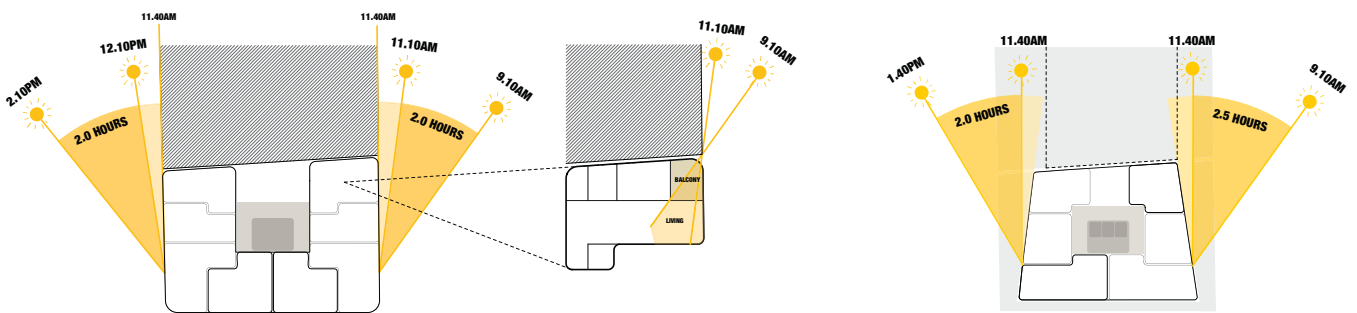
ATTACHMENT E

ATTACHMENT E

SOLAR ACCESS DIAGRAMS

148-160 KING STREET, SYDNEY

SOLAR ACCESS MEASUREMENT METHODOLOGY



MEASUREMENT METHODOLOGY - LOWER LEVELS

For the building lower levels, the sun is parallel to the east and west building faces at approximately 11.40am on June 21st. To allow sunlight to adequately penetrate apartments, a 30 minute window either side of this time has been allowed. The 2 hour minimum requirement has then been measured over and above this additional 30 minutes.

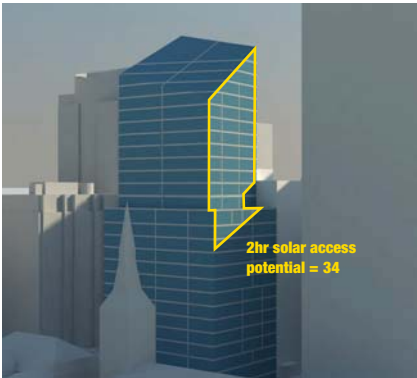
APARTMENT CONFIGURATION

As a general design principal, balconies have been located on the northern side of individual apartments to maximise sunlight to both internal and external living spaces.

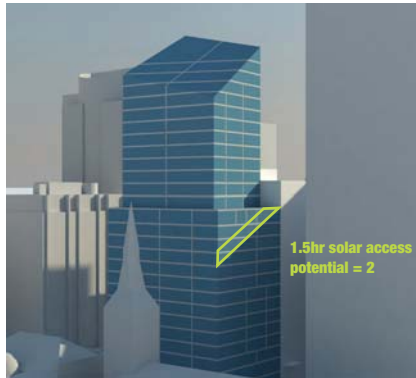
MEASUREMENT METHODOLOGY - UPPER LEVELS

For the upper levels, the sun is parallel to the east and west angled building faces at approximately 12.10am on June 21st (east face) and 11.10am (west face). Again, a 30 minute window has been allowed on top of these times before the 2 hour minimum solar access requirement has been measured.

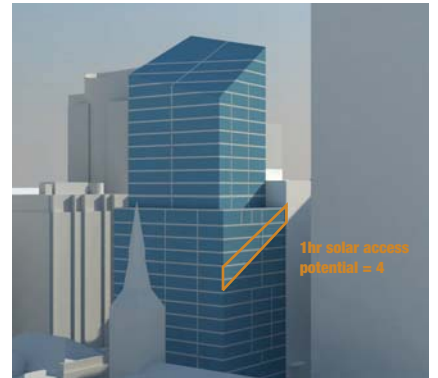
ATTACHMENT E



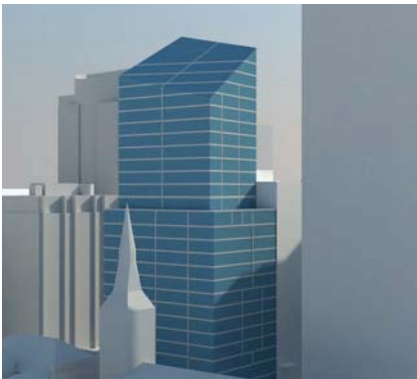
Proposed Envelope
9.10am June 21st



Proposed Envelope
9.40am June 21st



Proposed Envelope
10.10am June 21st



Proposed Envelope
10.40am June 21st

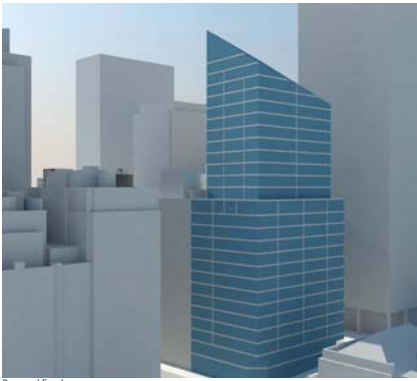


Proposed Envelope
11.10am June 21st

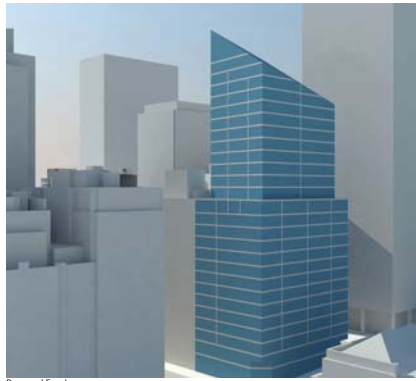


Proposed Envelope
11.40am June 21st

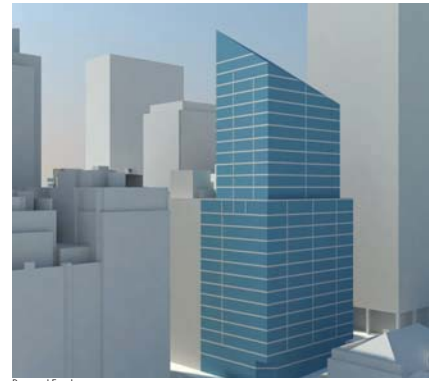
ATTACHMENT E



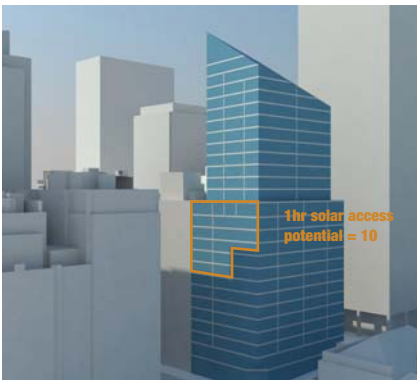
Proposed Envelope
11.40am June 21st



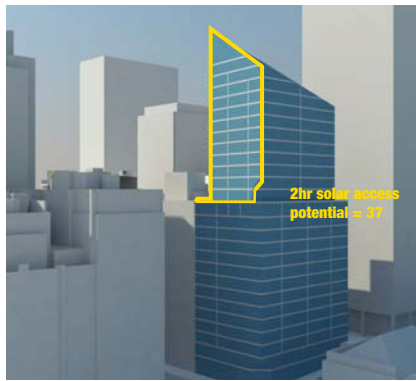
Proposed Envelope
12.10pm June 21st



Proposed Envelope
12.40pm June 21st



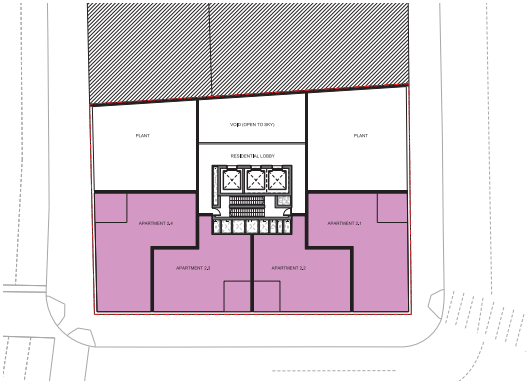
Proposed Envelope
1.10pm June 21st



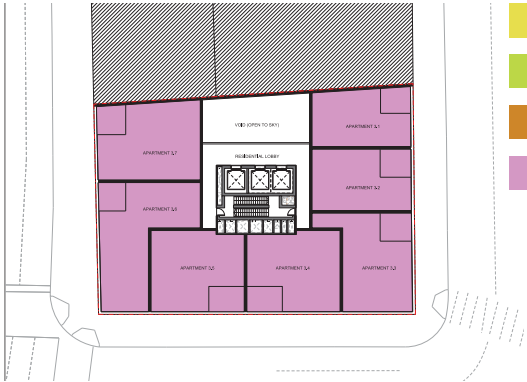
Proposed Envelope
1.40pm June 21st

- Apartments that receive a minimum of 2 hours of direct sunlight to living room and balconies on June 21st.
- Apartments that receive between 1.5 and of hours of direct sunlight to living room and balconies on June 21st.
- Apartments that receive between 1 and 1.5 hours of direct sunlight to living room and balconies on June 21st.

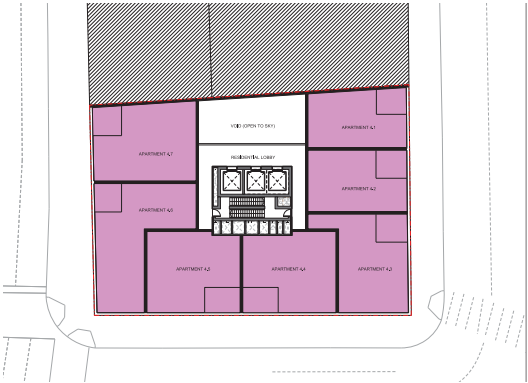
ATTACHMENT E



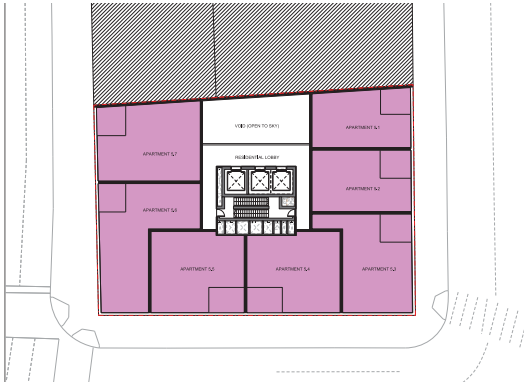
LEVEL 02



LEVEL 03



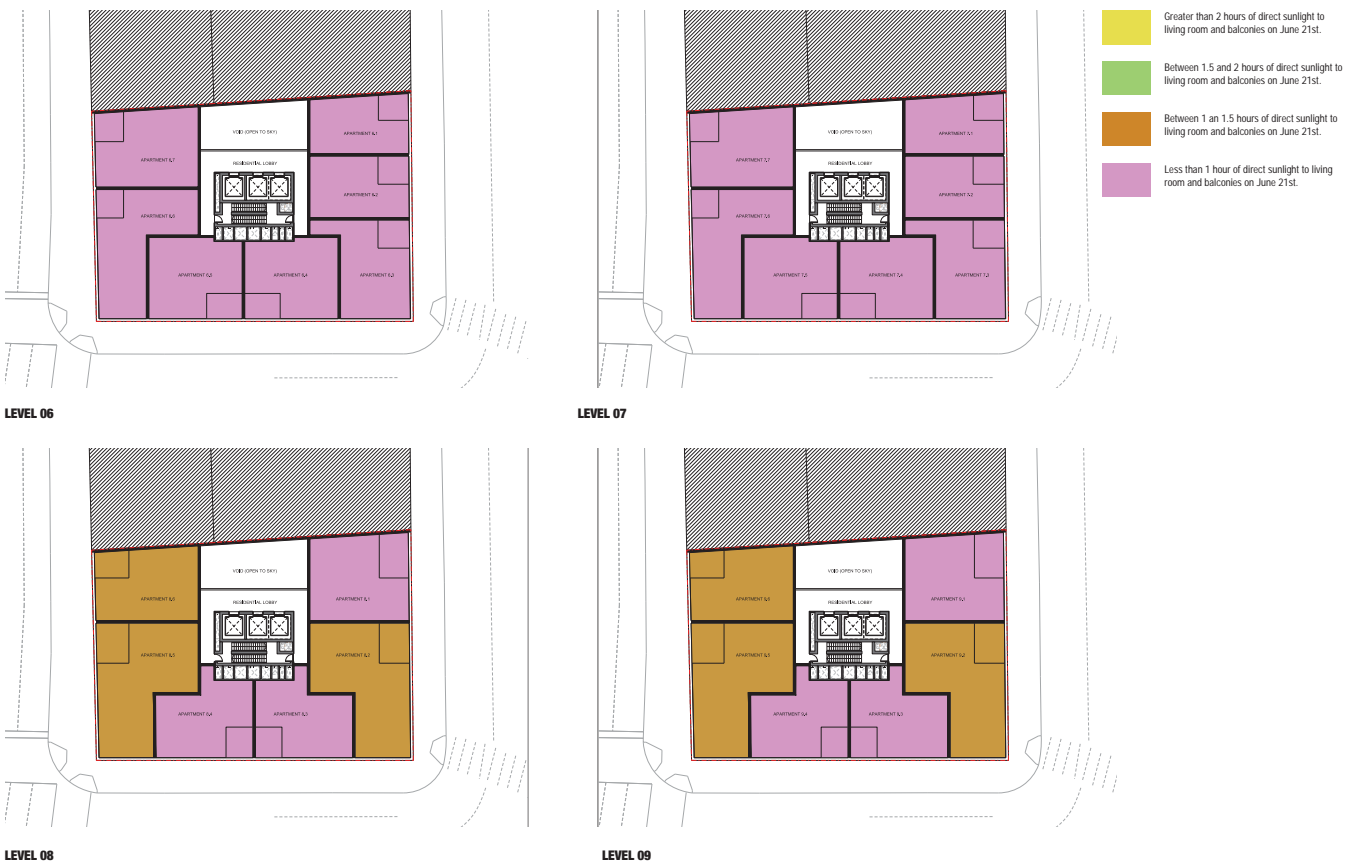
LEVEL 04



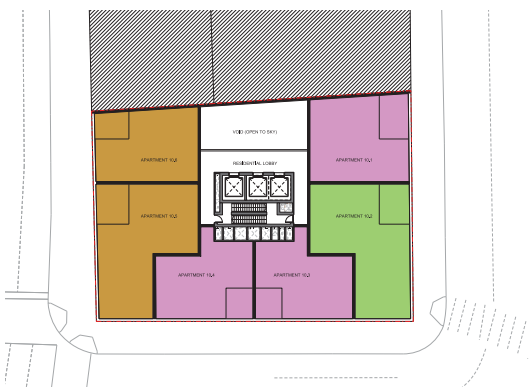
LEVEL 05

- Greater than 2 hours of direct sunlight to living room and balconies on June 21st.
- Between 1.5 and 2 hours of direct sunlight to living room and balconies on June 21st.
- Between 1 and 1.5 hours of direct sunlight to living room and balconies on June 21st.
- Less than 1 hour of direct sunlight to living room and balconies on June 21st.

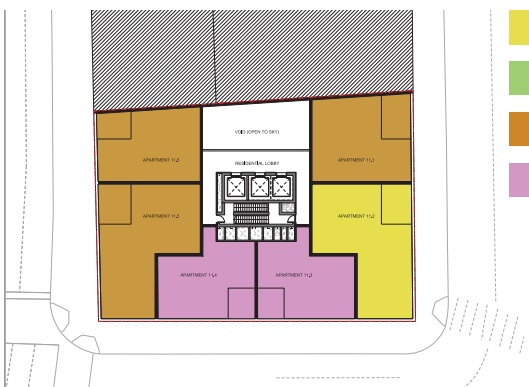
ATTACHMENT E



ATTACHMENT E

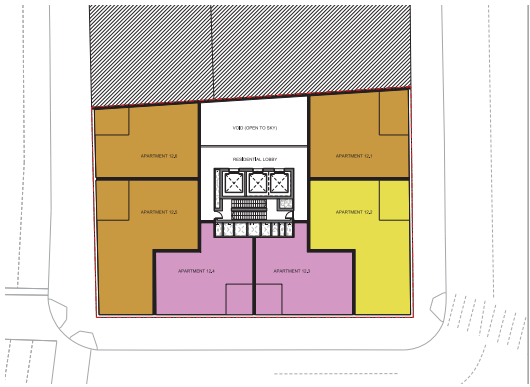


LEVEL 10



LEVEL 11

- Greater than 2 hours of direct sunlight to living room and balconies on June 21st.
- Between 1.5 and 2 hours of direct sunlight to living room and balconies on June 21st.
- Between 1 and 1.5 hours of direct sunlight to living room and balconies on June 21st.
- Less than 1 hour of direct sunlight to living room and balconies on June 21st.

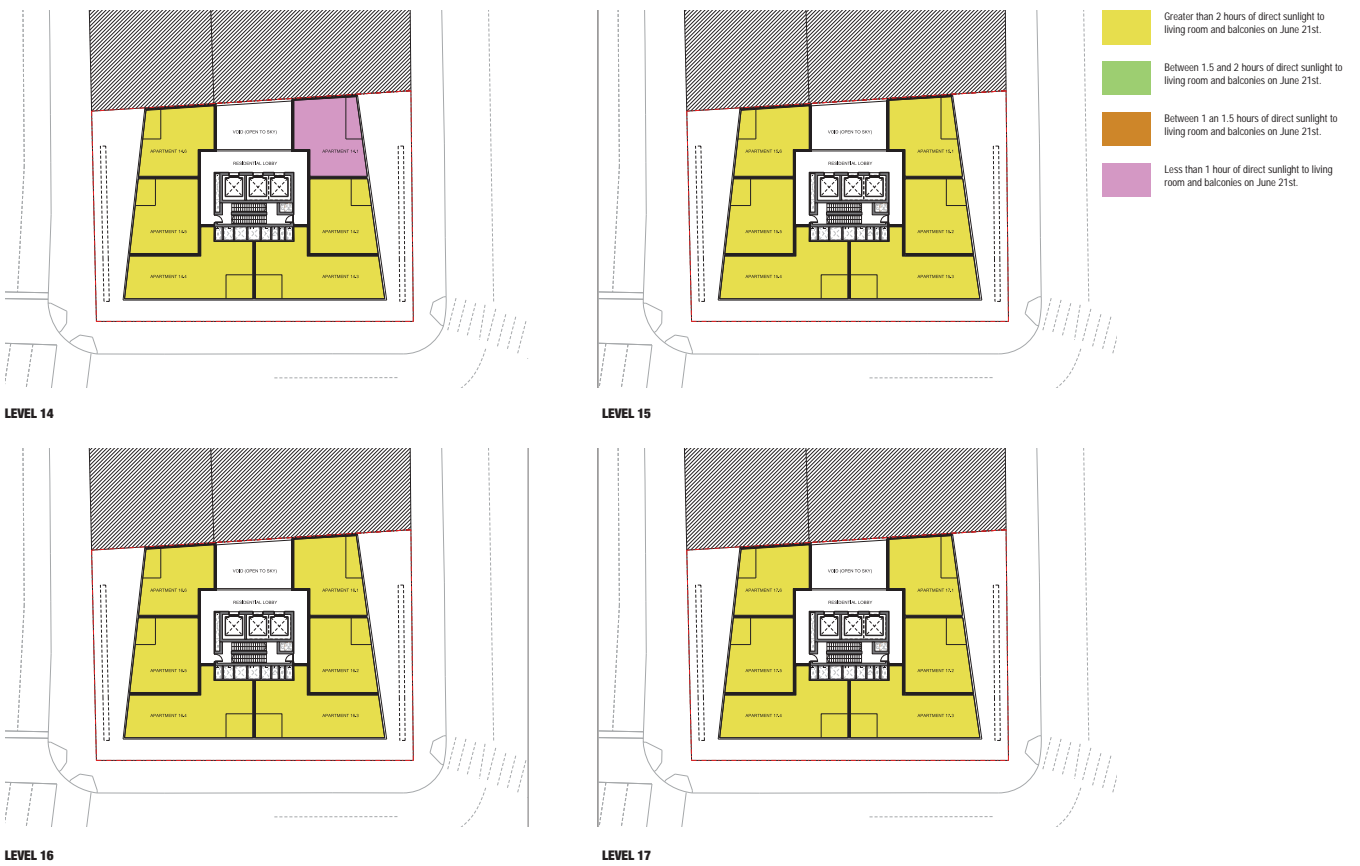


LEVEL 12

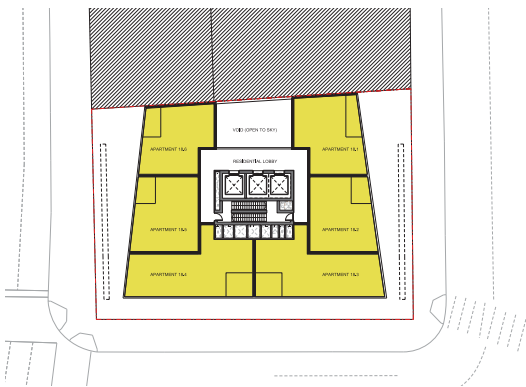


LEVEL 13

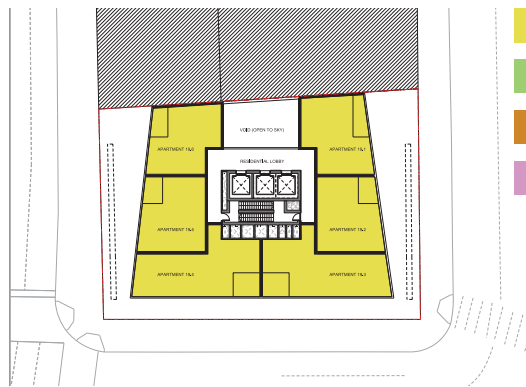
ATTACHMENT E



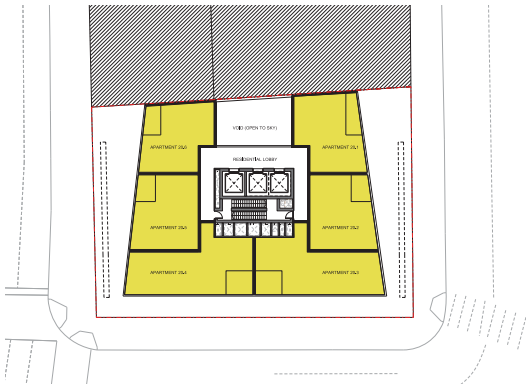
ATTACHMENT E



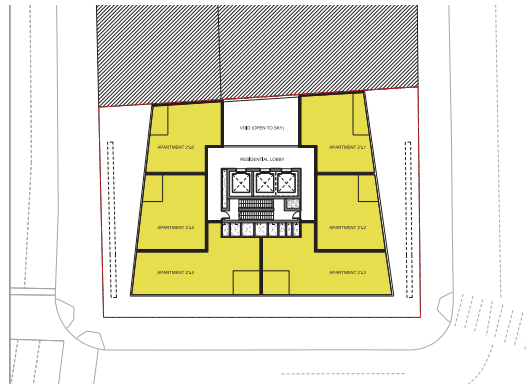
LEVEL 18







LEVEL 19



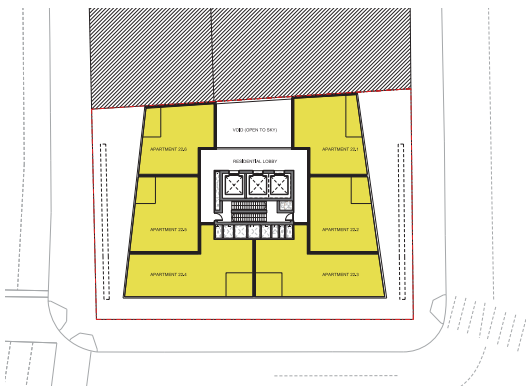
LEVEL 20



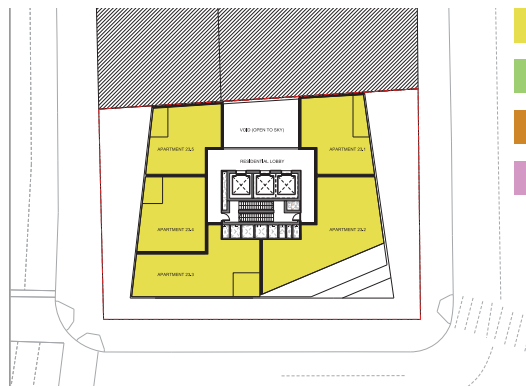
LEVEL 21

-  Greater than 2 hours of direct sunlight to living room and balconies on June 21st.
-  Between 1.5 and 2 hours of direct sunlight to living room and balconies on June 21st.
-  Between 1 and 1.5 hours of direct sunlight to living room and balconies on June 21st.
-  Less than 1 hour of direct sunlight to living room and balconies on June 21st.

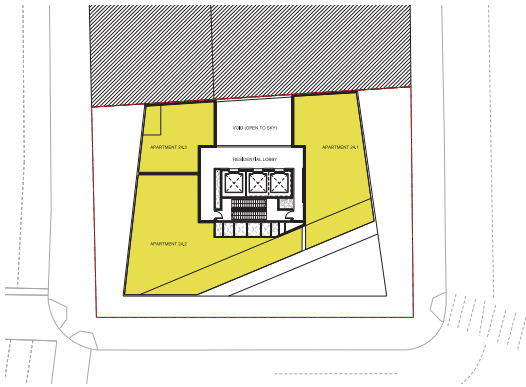
ATTACHMENT E



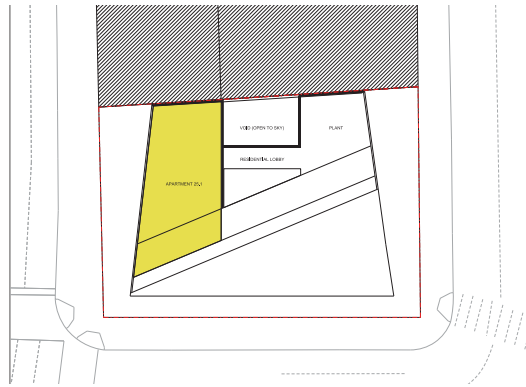
LEVEL 22



LEVEL 23



LEVEL 24



LEVEL 25

- Greater than 2 hours of direct sunlight to living room and balconies on June 21st.
- Between 1.5 and 2 hours of direct sunlight to living room and balconies on June 21st.
- Between 1 and 1.5 hours of direct sunlight to living room and balconies on June 21st.
- Less than 1 hour of direct sunlight to living room and balconies on June 21st.